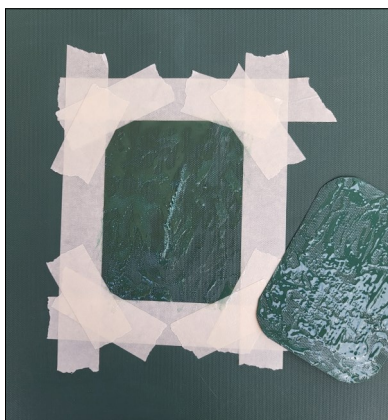
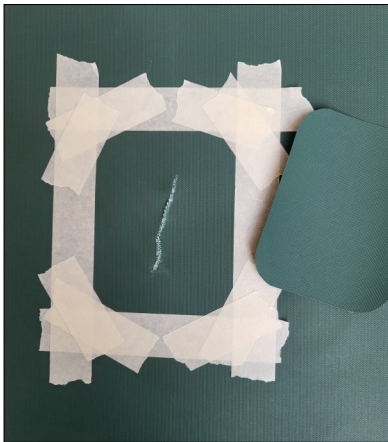


Patching the Top or Side Cover



1. Cut the patch to the appropriate size making sure it extends at least 1" beyond the damaged area. It is best to round the corners to avoid future peeling.
2. Hold the patch over the area to be patched and the outline the patch using some masking tape then remove the patch.
3. Following the instructions on the adhesive, apply an even coat of the adhesive to the backside of the patch and to the area where the patch will be applied.
4. Let the adhesive set for a few minutes until it is tacky before carefully applying the patch. Press it into position.
5. Remove the masking tape.

