



Replacing Your Dome Skylight

For best results, read entire instructions before beginning.

Please use a step ladder tall enough to safely reach the center ring.

1. Remove the dome skylight you are replacing (if necessary). To do so, securely tie a cord to two of the dome eyebolts and slide it down to a person below, outside the yurt. **Be sure to use a blanket, cardboard or long 2x4's under the dome to protect the top cover from being scratched by the dome as it slides down the roof.**
2. Use the method described above (be sure to protect the top cover from being scratched) to slide the new dome up the roof. If you do not have the dome opener option, simply secure the four safety gate hooks (from your wood center ring) to the eye bolts on the inside of your dome. (See Diagram A)
3. If you do have the dome opener option you will need to align the aluminum bracket on the dome with the corresponding bracket on the center ring. (See Diagram B) This should be facing away from prevailing winds. With the dome in place attach the three springs to the eye-bolts on the dome. Attach the dome skylight opener by loosening the bracket bolts on the ring, inserting the opener hub, and retightening. (See Diagram C) **Make sure the inner brass core of the opener is screwed all the way in at this point.** Now unscrew the thumbscrew that is on the dome's bracket and align the hole in the brass core of the opener with the bolt and screw it back in. You may have to screw the opener up or down a little to do this. Do not change the position of the inner brass core while adjusting the hole alignment. Be sure not to lose the two spacers and be sure that they get back in their proper location. (See Diagram C)

We recommend that you keep the dome closed if it is windy. In extreme wind extra precautions should be taken to secure the dome at the spring locations. Two long springs can be placed together at each side location, instead of just one. This will put more tension on the dome as it goes up, so you shouldn't crank it up more than a few inches, which should be plenty for ventilation. It will hold the dome more securely. Also, be sure to crimp the ends of the springs closed with a pair of pliers so they don't pull away from the eye bolt. Be sure to keep the dome down when you leave the yurt or in high winds. In addition you should attach the short safety chains to the eye bolts where the long springs attach on the dome (if included with your yurt). This way, even if the wind stretches your springs beyond a certain point, the chain would help hold it.

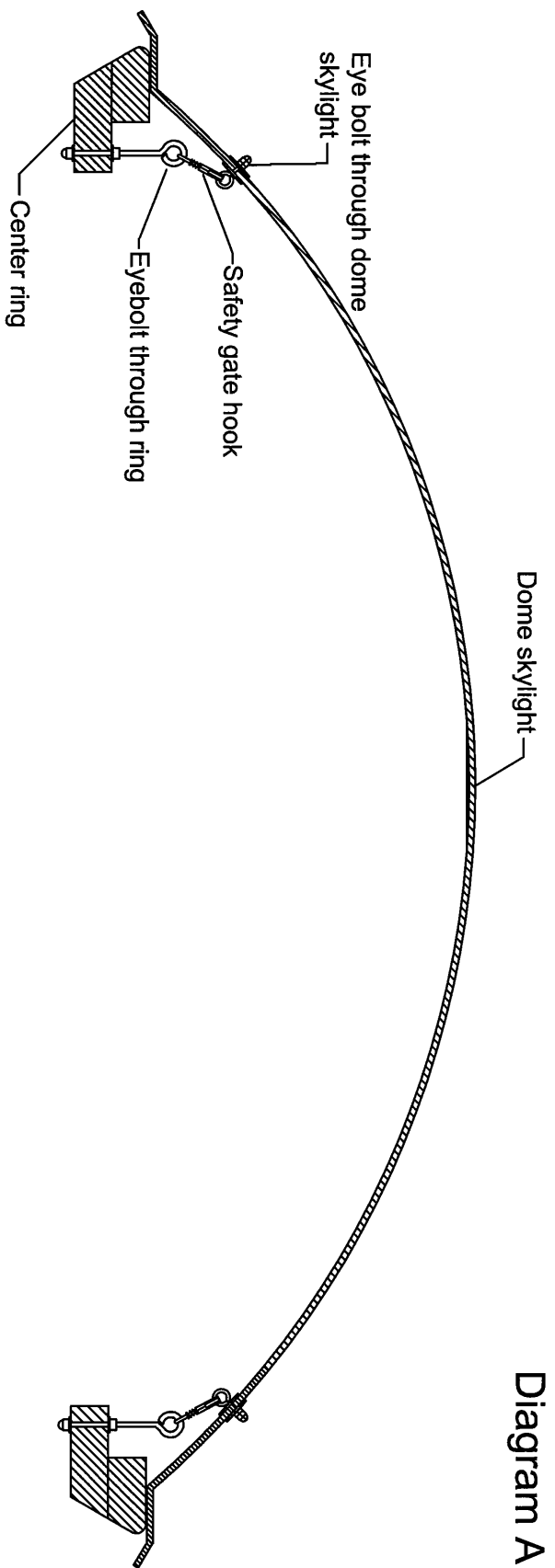
CAUTION: When lowering the dome skylight the opener should not continue to turn once the dome is closed. It should bottom out, which prevents overtightening that can result in a cracked or broken dome. If opener does not bottom out, it is installed improperly and should be removed and reinstalled per instructions above.

The original designer and manufacturer of the modern yurt, leading in quality and service for over 30 years.

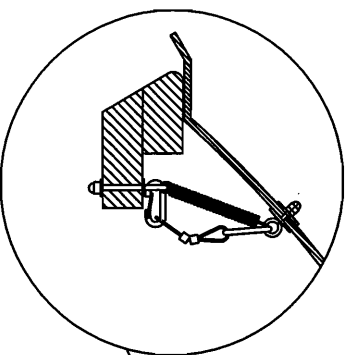
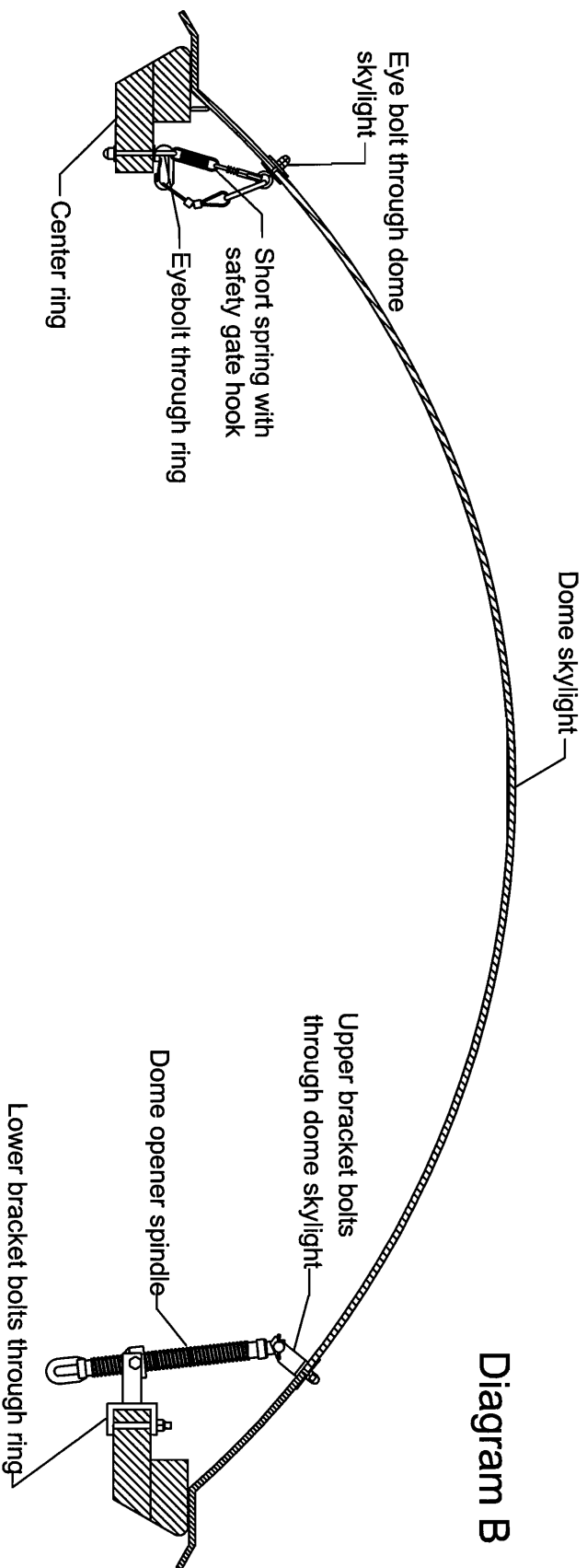
77456 Hwy. 99 S. • Cottage Grove, OR 97424 • (541) 942-9435 • FAX (541) 942-0508 • E-mail: info@yurts.com

Side View of Completed Assembly

Non-Opening Skylight



Side View of Completed Assembly Opening skylight



90 degrees to either side of the dome opener spindle are long springs with safety cables.

Dome Opener Spindle

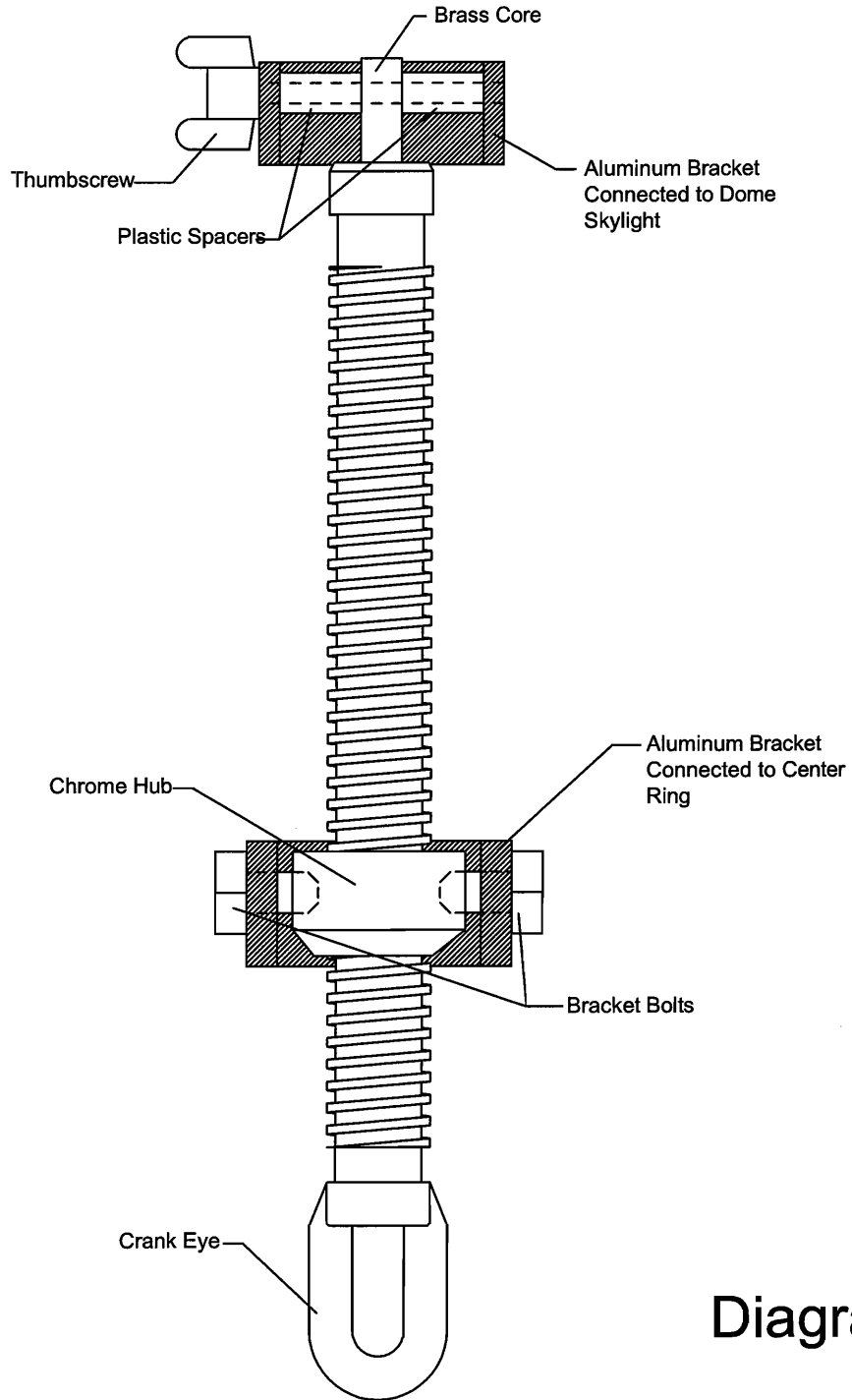


Diagram C